

Permanent Magnetic Circular Chuck

SPA 244.06

With radial pole arrangement

Use:

For cylindrical and ring-shaped workpieces.

Features:

High holding force. Concentric grooves to simplify workpiece alignment. Through hole possible up to maximum diameter D. Supplied as standard without through hole in centre. Central region (diameter C) not magnetically active. Available with flange on request (SPA 248.90 to 248.94, see Page 14/15).

For additional top plates see 248.05

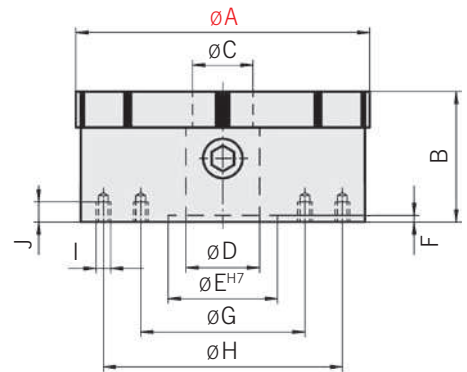
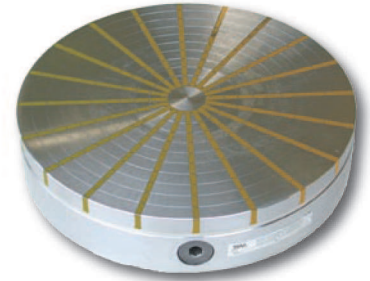
Bigger diameters available with T-slots on request.

Nominal holding force: 100 N/cm²

Pole plate wearing limit:

5 mm (for A = 150 to 300 mm)

10 mm (for A = 350 to 400 mm)



Dimensions in mm											
A	B ^{+9.5}	C	D	E	F	G	H	I	J	Number of poles	Weight in kg
100	48	14	-	51	6	76	-	M6	8	6	3
130	57	16	20	50	5	100	-	M6	10	10	6
150	57	20	24	50	5	80	120	M6	8	10	8
200	57	28	30	60	5	110	180	M6	8	12	14
250	70	30	50	80	5	140	220	M6	8	16	27
300	73	40	58	150	6	180	260	M8	10	16	41
350	73	40	58	170	6	220	300	M8	12	20	55
400	75	40	58	200	8	260	340	M8	12	20	75

Ordering example: Permanent Magnetic Circular Chuck SPA 244.06 - 400

Ordering key:

Laminated Circular Top Plate

SPA 248.05

For use on circular chuck 244.06 with radial poles

Features:

Can be machined to any required shape, or custom machined during manufacture. Suitable for SPA 244.06.

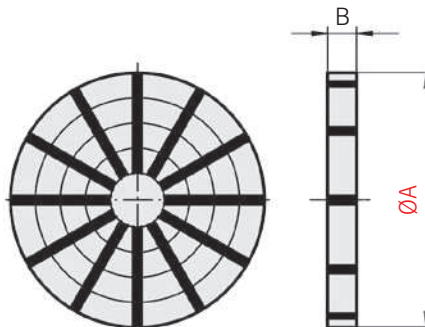
Mounting to be agreed upon.

Machinable depth: max. 8 mm

For bigger profiling depth, available with size B up to 25 mm



Dimensions in mm			
A	B	Number of poles	Weight in kg
150	20	10	3.0
200	20	12	5.0
250	20	16	8.0
300	25	16	14.0
350	25	20	19.0
400	25	20	24.5



Larger sizes available on request

Ordering example: Laminated Circular Top Plate SPA 248.05 - 150

Ordering key: